

***AMAR SEVA SANGAM, AYIKUDY***

***Annual General Body Meeting 2022***

# Secretary's Report



***Welcome to All Members!!***

*With the Blessings of the Almighty and assistance of good-hearted individuals, Corporate and the co-operation of all Committee Members, staff, volunteers and friends, well wishers, Amar Seva Sangam has completed*

**41 years**

*of glorious and dedicated service to the physically and mentally challenged persons. With all your help, we have started many new projects during the previous years for the challenged people for which we thank all of you for your dedicated services and support.*

## Highlights

### Hon'ble Governor of Tamil Nadu, Shri R.N.Ravi, visited on 19.06.2022

We are very happy to inform you that the event organized by us to celebrate our 40th Anniversary of our services was very successful. The Hon'ble Governor of Tamil Nadu, Shri R.N.Ravi, Chief Guest and District Collector, Shri P. Akash, Guest of Honor, graced the occasion. It was well attended by our donors, guests, volunteers and staff. Three vital projects were inaugurated by the Hon'ble Governor. In his speech, the Hon'ble Governor stressed about greater awareness of the rights of Persons with Disabilities as enshrined in the law and take advantage of it. He had all praise for our Organization's excellent performance – that too, headed by Shri.Ramakrishnan and Shri S. Sankara Raman. Both the speeches of the Governor and the District Collector were motivational and encouraging. They went around the campus and saw the activities.





## Highlights

### Our 40th year anniversary celebration held at Chennai on 25.7.22.

We are very happy to inform you that our 40th year anniversary celebration held at GRT Grand, T. Nagar, Chennai, on Monday, the 25th July 2022 was a grand success. Our Hon'ble Chief Minister, along with his senior ministers, attended the function as Chief Guest and paid very sincere and impressive compliments to the Sangam's work.





## Meeting with our Prime Minister on 29.07.2022 at Anna University during his visit to Chennai for Chess Olympiad inauguration.



## Highlights

Padma Shri 2020 Award was conferred to the Founder President by Hon'ble President of India Shri Ramnath Kovind on 08.11.2021 at New Delhi





## Highlights

### Felicitation to President for receiving Padma Shri 2020 Award on 11.11.2021

Our Founder President was conferred with Padma Shri 2020 Award by the Hon'ble President of India on 08-11-2021. A grand felicitation was arranged by the Amar Seva Family on 11-11-2021.





## Highlights

The President and Secretary met the Chief Minister and the Chief Secretary of Tamil Nadu and discussed about the scaling up of Early Intervention services throughout Tamil Nadu State on 15.12.2021 .





## Scroll of Honor Award to Shri. S.Sankara Raman on 05.03.2022 by Southern India Regional Council of Institute of Chartered Accountant of India





## Highlights

Smt. Geetha Jeevan MLA, Minister of Social Welfare & Women Empowerment visited our campus on 01.04.2022 and had a glance of our activities





## Highlights

Deepavali celebrations at Sangam on 4th Nov. 2021.





## Highlights

Natarajan and Veeramani Group from Chennai performed Ayyappan Pooja in our campus on 20.11.2021





## Highlights

Solidarity Booth was opened at Ayikudy on 3<sup>rd</sup> Dec 2021 on the occasion of World Disability Day 2021 celebrations. Sub-Inspector of Ayikudy Police Station opened the booth.





## Highlights

Commander Vishal Gupta and Captain Ashish Sharma from INS Kattabomman visited in our campus on 06.05.2022.





## Highlights

Hon. Secretary attended State Education Policy Zonal Level Meeting at Collectorate, Tirunelveli on 20.09.2022.





## Highlights

Sadha Chandi Maha Yagam performed on 13.05 2022.





## Highlights

### Hon'ble Health Minister's visit to ASSA on 10.7.2022.

As a series of celebrations to mark 40 years of meritorious service for the welfare of Persons with Disabilities, Amar Seva Sangam, conducted a program to inaugurate our new Amar - Abdul Kalam Rehab Orchard at Vindankottai by Thiru Ma. Subramanian, Hon'ble Minister for Health & Family Welfare, Government of Tamil Nadu on the evening of 10 th July 2022. Thiru M. Dhanush Kumar, Member of Parliament, Tenkasi, Thiru S. Palani Nadar, Member of Legislative Assembly, Tenkasi and other dignitaries and party workers also graced the occasion.





## Highlights

### The Staff Annual Day celebration on 26.6.22.

The Staff Annual Day celebration was held in our campus on 26.06.2022 and the guests were Sri.V.Viswanathan Managing Trustee, Aum Pranavashram, Courtallam, Dr.Venkatramani and Dr.Malathi Venkatramani, Chennai Sri.A.Manikandan Managing Director, Hotel Sri Madhuram, Tirunelveli, Sri.S.Ramanathan, Retd. DGM, National Dairy Development Board, Tenkasi Smt.Vijayalakshmi Chandrasekar Coimbatore.





## Highlights

Thiru K.Nanthakumar, I.A.S, Tamilnadu Education Department Commissioner Visited our Campus on 13-7-2022.



AGM 2022

24th Sep-2022



## Other Events

Felicitation to the students of Amar Seva Saradambal ITI at Chennai for their achievement in the course completion examination by Shri.C.V.Ganesan, Hon'ble minister for Labour Welfare and Skill Development on 17-09-2022





## Other Events

### Salem Nallor Vattam Congregation





## Other Events

National Apprenticeship Mela was conducted at Tenkasi Govt ITI and 10 Differently Abled Students of our Amar Seva Saradambal ITI got direct placement in Autotex Pvt. Ltd., Coimbatore and 5 in Valli Garments, Sattur. Their appointment orders were also issued in the program.





## Other Events

### Onboarding training to NGOs

Varshini Illam Trust (VIT), Chennai is a registered public charitable trust started in 2014 by Mr P. N. Vasudevan, Mrs Choodamani Vasudevan with the lofty idea of helping the underprivileged in society, especially children lead a wholesome life through multiple level interventions.

Varshini illam team visited Amar Seva Sangam for on boarding training in Enabling Inclusion® model & platform. A team of 9 people which includes Founder, Board Members, Physiotherapists, Project Coordinators & helper have been trained.





## Other Events

### Onboarding training to NGOs

The Amar Seva Sangam Team visited Kiran Society, nonprofit organization, Varanasi, Uttar Pradesh from 23.05.2022 to 27.05.2022. The team reviewed their work and trained their team for effective implementation of their outreach program. This is a part of our ongoing support towards using our model and app.





## Other Events

### Onboarding training to NGOs

Shishu Sarothi from Guwahati has been using Enabling Inclusion® App since September 2021, in a region, where access to early childhood interventions is limited. This app has allowed them to screen and identify children with developmental disabilities.

The ASSA's EI App technical team visited Shishu Sarothi to review their work and to promote EI app use by rehab professionals. This is a part of our ongoing support towards using our model and app.





## Other Events

### Amar Seva Sangam School SSLC Toppers Mach 2022



**S.Maheshwari**  
455/500



**U.Murugeshwari**  
451/500



**R.Sangeetha**  
447/500



## Other Events

### Amar Seva Sangam Higher Secondary School Toppers



B.Sakthivel  
557/600



J.Surya  
505/600



S.Kavitha  
501/600



## Other Events

**Jagadheesh Adappa conducted Training for Fire & safety and motivational Speech to our staffs on June 30<sup>th</sup> 2022**





## Other Events

The Emergency Exit Ramp at our Siva Saraswathi Vidyalaya was virtually inaugurated by Smt.Pramila Chidambaram in the memory of Chilkoor Harihar Rao family on 15.10.2021.





## Other Events

House Warming ceremony of RPSNC building and Amir Babu Hall on 24.10.2021





## Other Events

### Inauguration of Equipment of Amar Seva-Saradambal ITI on 18.4.22.

The Equipment of Amar Seva – Saradambal Industrial Training Institute was formally inaugurated on 18.4.2022. The program was inaugurated by Shri Sanjay Kumar Agarwal, Chairman-cum-Managing Director, M/s. Antrix Corporation Limited, Bangalore in the **presence of Superintendent** of Police, Tenkasi.





# Fundraising Events

## TCS World 10K Run Bengaluru on 15.5.2022

We participated in TCS World 10K Run Bengaluru, which was held on 15th May 2022. This year we raised funds under the banner Inclusive Education for Students with Disabilities. We would like to sincerely thank all our donors for having supported us with donations and blessings, otherwise it would be very difficult to successfully implement our programs. Bengaluru is always a special city for us. Our team at ASSA has been participating in this event since its inception in 2014 to raise funds. It was wonderful to be back here after two COVID years.





# Fundraising Events

**TCS World 10K Run Bengaluru Second Highest Fundraising Organization Award to Amar Seva Sangam received on 22.07.2022**







# Developmental Projects





# Project Completed List FY 2021-22

CSR Area	Project Category	Project	Purpose	Sum of Project cost Rs. Lakhs	Sum of Rev. Project cost Rs. in Lakhs	Sum of Funded Amt Rs. Lakhs	Sum of Fund gap Rs. Lakhs
Healthcare	Automation	Software development M VBR -EI Vr 3.1.2	Incorporating above 6 aspects in the app	5.00	5.00	5.00	-
	Extensions	Compound wall North East Part-1 of Phase-II - 35 m North of Gate	Compound wall Western side Northern portion 250 metres and Northern side Eastern portion 100 meters	4.69	4.69		4.69
		Compound wall North East- Part-2 of Phase-II 33 meter East of North Gate	Essential and Urgent requirement to prevent tresspassing and safty of the residents in the campus	10.79	7.74		7.74
		Compound wall North West- Part-1, Phase-II - 105+57+6meter	Essential and Urgent requirement to prevent tresspassing and safety of the residents in the campus	17.28	17.28		17.28
	Renovation	Toilet Block for Home	Demolish old and build new	35.00	35.00	36.00	-1.00
Skill Development	New Initiative	Computers, Software & Sewing Machines for Amar Seva Saradambal ITI	To train 60 differently able persons annually and give them job placements in industries or self-employment	72.00	72.00	101.63	-29.63
Grand Total				144.76	141.71	142.63	-0.92



# Projects for the Coming year 2022-23

CSR Area	Project Category	Count of Project	Sum of Rev. Project cost Rs. in Lakhs	Sum of Funded Amt Rs. Lakhs	Sum of Fund gap Rs. Lakhs
Education	Extensions	1	200		200
	New Initiative	2	55		55
	<b>Education Total</b>	<b>3</b>	<b>255</b>		<b>255</b>
Healthcare	Automation	1	5	-	5
	Extensions	13	927	-	927
	Renovation	2	9	2	7
	New Initiative	4	752	29	723
<b>Healthcare Total</b>		<b>20</b>	<b>1,693</b>	<b>31</b>	<b>1,662</b>
<b>Grand Total</b>		<b>23</b>	<b>1,948</b>	<b>31</b>	<b>1,917</b>



# Projects for the Coming year 2022-23

Current Status	Expected Completion date	Project	Purpose	Source of Funds	Sum of Project cost Rs. Lakhs	Sum of Rev. Project cost Rs. in Lakhs	Sum of Funded Amt Rs. Lakhs	Sum of Fund gap Rs. Lakhs
Completed	01-07-2022	44 Cent Southern side compound wall Part I phase II- 47 Meter	Essential and Urgent requirement to prevent tresspassing and safety of the residents in the campus	Own Funds	7.14	7.14		7.14
		Kitchen wash area Renovation	Kitchen flooring, ceiling, painting	Donor	10.00	1.80	2.15	-0.35
		North Gate and North Gate Security Admin Block	Essential and Urgent requirement to prevent tresspassing and safty of the residents in the campus	CSR	4.28	4.28		4.28
		Rehab orchard kudil and toilet	Orchard as a therapy for physically and intellectually changlenged children	PWC and other donors	8.24	8.24		8.24
To start	01-10-2022	Checkdam 168m	to augment the rain water and underground artisian in the Sangam	(blank)	30.00	30.00		30.00
	01-12-2022	Solar Lighting Stage-I phase II	Power cost reduction	ABB	60.00	40.00	-	40.00
		75KLD Waste water treatment plant with one year AMC	water treatment of the existing bio gas let waste water for better sanitation and hygiene and to create space for checkdam water	(blank)	39.47	39.47		39.47
		Compound wall North East- Part-2 of Phase-II 13 meter East of North Gate	Balance 13 mts to be done while checkdam work is undertaken	(blank)		3.05		3.05
		Compound wall North East- Part-2 of Phase-II 15m on north eastern side of the check dam running south to north perpendicular to checkdam.	Essential and Urgent requirement to prevent tresspassing and safety of the residents in the campus	(blank)	2.25	2.25		2.25
		Differently abled youth trainees- girls hostel emergency exit ramp	To enable barrier free emergency exit and to comply with Govt norms	(blank)	0.88	0.88		0.88
		Differently abled youth trainees girls hostel to medical testing unit ramp	To enable barrier free movement	(blank)	2.21	2.21		2.21
		Primary School new toilet building	Barrier free toilet for primary school children	(blank)	5.75	5.75		5.75
	01-01-2023	Software development M VBR -EI Vr 4.2	Pathway to document Assistive Devices needs and usage	GCC		-	-	-



# Projects for the Coming year 2022-23

Current Status	Expected Completion date	Project	Purpose	Source of Funds	Sum of Project cost Rs. Lakhs	Sum of Rev. Project cost Rs. in Lakhs	Sum of Funded Amt Rs. Lakhs	Sum of Fund gap Rs. Lakhs
	01-03-2023	Admin office first floor(5164 sft)	Building for COE	(blank)	126.83	200.00		200.00
		Digital Class Rooms	to provide access to digital learning environment in an inclusive for school education	(blank)	30.00	30.00		30.00
		Dining Hall Renovation	(blank)	(blank)		7.00		7.00
		Fire Hydrant & Fire Alarm Systems Phase I	for safety and disaster management	(blank)	25.00	12.00		12.00
		Handrail for School Children	For better movement of children within the premises and for walk training	(blank)	25.00	25.00		25.00
		Higher Secondary school Toilet Pathway	To enable barrier free movement	(blank)	5.27	5.27		5.27
		Post Acute Care for Spinal injured expansion 30 beds	To establish a state of the art rehab specialty centre to cater growing number of Spinal injured persons in need of such services	CSR funding approached	800.00	800.00		800.00
		Residential programme and differently abled youth trainees connecting ramp to Vocational training centre	Handrails in walkway from new home to VTC and MTU for safe and barrier free movement of children	(blank)	8.83	8.83		8.83
		Sensory integration for Adults	For autism grown ups	CSR	25.00			25.00
		Stroke care Centre	New initiative to prevent stroke patients from becoming physically challenged	CSR funding approached	495.00	700.00	19.30	680.70
		VBRI D SHG Accounting software	There is an urgent need to digitise on real time basis the Accounting transaction of each and every SHGs to have control over the Financial management	GCC	10.00	10.00	10.00	-
Grand Total					1,721.15	1,943.18	31.45	1,936.73





# Section Report

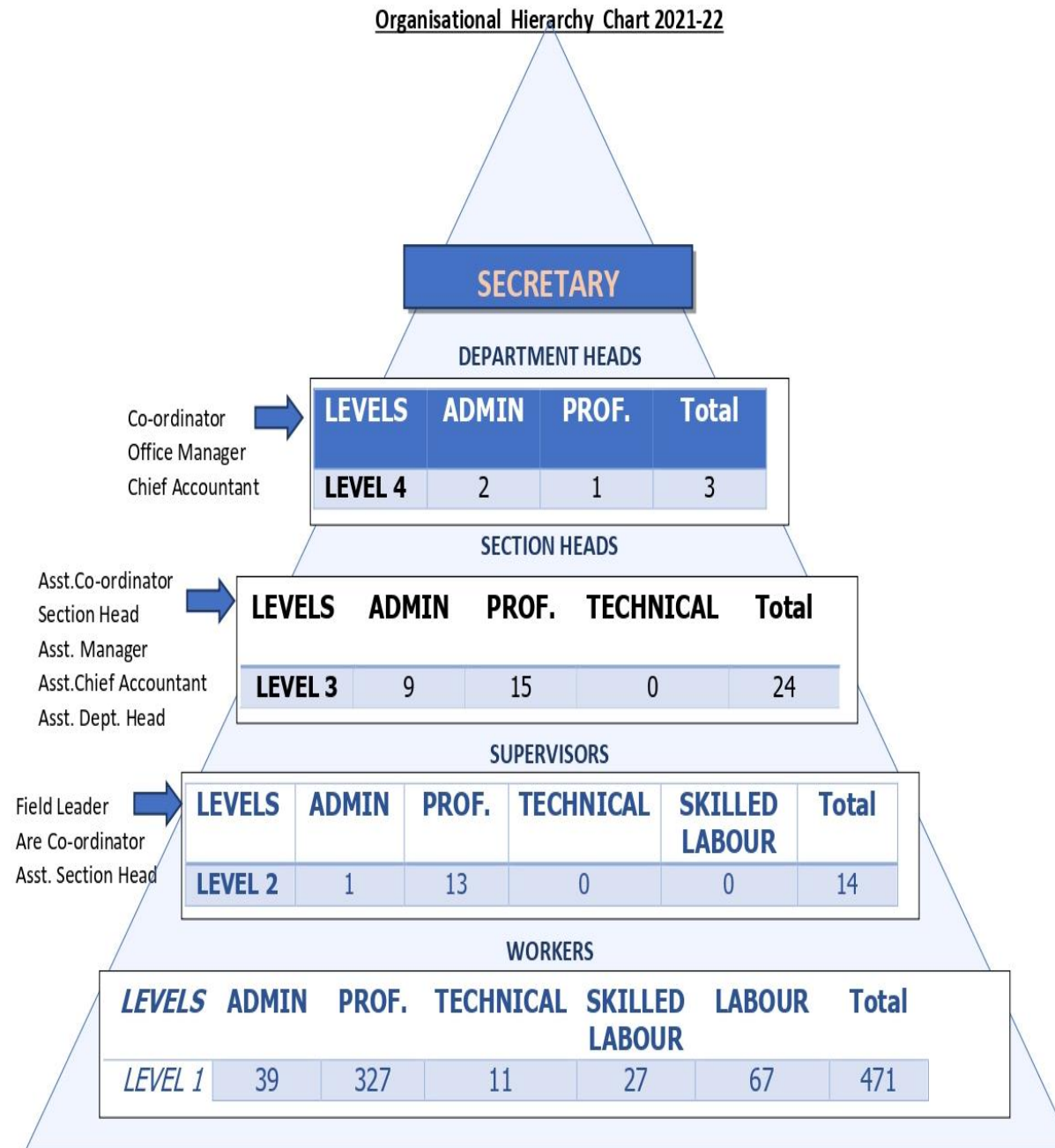




**Service  
user List  
2021-22**

1	Differently abled children benefited at Home	44
2	The Mentally Retarded children studying in Sangamam Special School	74
3	Integrated School Students Nursery, Primary & Hr.Sec.School	681
4	Differently abled youth and girls staying in the hostel	34
5	Vocational Training Centre students	
	a) Computer Centre	61
	a) Typewriting Centre	75
	a) Tailoring and Handicrafts	18
6	IGNOU / Alagappa University Students	112
7	Amar Institute of Rehabilitation Science students	9
8	No. of students in Amar Seva – Saradambal ITI	28
9	No. of persons who received treatment at our Medical Centre	476
10	No. of Persons benefited by corrective surgeries	3
11	Spinal cord affected persons – treatment and care	26
12	Persons benefited from rural rehabilitation scheme (100km range)	1273
13	No. of Tricycles and wheelchairs Distributed	74
14	No. of Callipers, Auxiliary Crutches and Artificial Limbs issued	91
15	No. of National Identity Card issued for Differently abled persons	82
16	Early Intervention Rehabilitation Centre children	55
17	No. of special children enrolled in the Integrated Schools	14

# Organization chart





# Amar Seva Sangam Policies

- 1.Human Resource Policy.
- 2.Accounts Dept. Operating Manual.
- 3.Procurement Policy.
- 4.Board Manual Policy.
- 5.Anti-Bribery and Anti-Corruption Policy.
- 6.Child Protection Policy.
- 7.Policy on Code of Conduct and Conflict of Interest.
- 8.Prevention of Sexual Harassment at workplace Policy.
- 9.Whistle blower Protection Policy.
- 10.Risk Management Policy.
- 11.Employee Grievance Policy .
- 12.Data Privacy Policy.
- 13.Web Application Security policy .



# Financial Performance

## Summary







# **Amar Seva Sangam**

## **Audited Final Accounts FY 2021-22**



# Amar Seva Sangam Auditor's Report FY 2021-22

## AUDITOR'S REPORT

We have audited the attached Balance Sheet of **AMAR SEVA SANGAM, SULOCHANA GARDENS, 10-2-163B, TENKASI ROAD, AYIKUDY – 627 852** (herein after called Trust) as at **31<sup>st</sup> March 2022** and also the attached Income and Expenditure Account for the year ended on that date annexed thereto. These financial statements are the responsibility of the Trust committee. Our responsibility is to express an opinion on these financial statements based on our audit.

We conducted our audit in accordance with auditing standards generally accepted in India. Those standards require that we plan and perform the audit to obtain reasonable assurance about whether the financial statements are free of material misstatement. An audit included examining, on a test basis, evidence supporting the amounts and disclosures in the financial statements. An audit also includes assessing the accounting principles used and significant estimates made by management, as well as evaluating the overall financial statement presentation. We believe that our audit provides a reasonable basis for our opinion.

- We have obtained all the information and explanations, which to the best of our knowledge and belief were necessary for the purposes of the audit.
- In our opinion, proper books of accounts as required by Trust Act and Rules there under and Bye Law of the Trust have been kept by the Trust which give all information required by the Act and in the manner so required.
- The Balance Sheet and the Income & Expenditure Account dealt with by this report are in agreement with the books of accounts of the Trust.
- In our opinion and to the best of our information and according to explanation given to us, the said accounts give all the information required by the Trust Act, and Rules therein in the manner so required and give a true and fair view.

- i. In the case of Balance Sheet of the state of affairs of the Trust as at **31<sup>st</sup> March 2022**
- ii. In the case of Income and Expenditure Account of the excess of income over expenditure (Surplus) of the Trust for the year ended on the date.

Place : Chennai  
Date : 23<sup>rd</sup> Sep 2022

for **M. SRINIVASAN & ASSOCIATES**  
Chartered Accountants.

S.Santhosh  
Partner  
M.No. 230839





# Audited Balance sheet as at March 31, 2022

Rs. In Lakhs

F U N D S & L I A B I L I T I E S	As At 31-03-2022	As At 31-03-2021	P R O P E R T Y & A S S E T S	As At 31-03-2022	As At 31-03-2021
<b>Liabilities</b>			<b>Assets</b>		
<b>Corpus Funds</b>			<b>Fixed Assets</b>		
Corpus	1,680.82	1,605.31	Gross Block of Fixed Assets	3,579.01	3,282.68
			Accumulated Depreciation	(1,458.14)	(1,184.36)
<b>Building and equipment Corpus</b>			Capital Work in Progress	71.61	92.97
Bldg and equipment Corpus funds	1,782.97	1,602.34	Long Term Investments	1,690.28	1,672.79
Government Grant	6.20	6.20	<b>Current Assets, Loans and Advances</b>		
Private Grants	224.58	224.58	Loans and Advances Assets	28.44	29.29
GCC Project	591.37	706.74	Sundry Debtors	7.86	8.14
<b>Reserves and Surplus</b>			Cash Accounts	0.00	0.05
Reserves and Surplus	299.96	325.00	Other Receivables	37.61	54.52
Income and expenditure surplus/deficit	360.00	179.30	Staff Expenses Advances	0.15	0.00
<b>Longterm Liability</b>			Prepaid expenses	7.03	2.96
Bank CCD Account*	-	-	Short Term Investments	909.24	752.87
<b>Current Liability and Provisions</b>			Stock	17.11	12.48
Sundry Creditors	4.63	12.88	Other Current Assets	49.41	44.65
Provisions	147.73	137.34	Bank Accounts	196.97	79.11
Sundry Creditors - Supplies and Services	20.14	36.79	Employee Receivable Control Account	0.02	0.03
Sundry Creditors Statutory	-	(3.31)	Sundry Creditors - Supplies and Services	13.39	21.71
Sundry Creditors Others	-	-			
Sundry Creditors Deposit	0.10	0.10			
Sundry Creditors Retention	20.97	22.90			
Employee Payable PF	0.97	2.04			
Employee Staff Welfare Fund	0.05	0.05			
Employee Security Deposit	9.89	11.64			
	<b>5,150.00</b>	<b>4,869.90</b>		<b>5,150.00</b>	<b>4,869.90</b>



# Audited Income & Expenditure as at March 31, 2022

Rs. In Lakhs

EXPENDITURE	As At 31-03-2022	As At 31-03-2021	INCOME	As At 31-03-2022	As At 31-03-2021
<b>Developmental Rehabilitation</b>			Donation Income	1,441.05	1,494.40
Extension Services	52.16	44.66	Interest Income	99.24	103.12
Networking Expenses	61.35	45.53	Other Income	0.01	0.01
			Product Income	11.74	14.78
Rehabilitation Delivery of Services	19.21	59.01	Services Income	31.47	12.20
<b>Early Intervention</b>					
Early Intervention (Project salary ASSA share)	9.63	5.01			
APPI - Early Intervention	142.69	174.67			
TTS3 TN GOVT scale-up	93.36	118.31			
TTS3 GCC Scale-up	101.07	148.74			
District Early Intervention Center	11.30	0.57			
SCB EI	42.06	-			
HCI EI_ Rehab Resource Team	37.39	-			
TTS3 TN GOVT 23 Blocks scale-up	112.12	-			
Centre of Excellency	0.31	-			
Home	25.35	15.14			
Sangamam School for Special Children	26.36	8.20			
Medical Testing Unit	25.65	12.63			
Spinal Care	52.70	33.33			
Caliper Expenses	15.01	4.87			
Village based development	40.73	71.67			
School Expenses	92.27	67.63			
Vocational Training Expenses	6.94	8.17			
Delivery of Services and Infrastructure	101.70	74.11			
<b>Public Communication and Administration</b>					
Office Expenses Cost Centre	52.71	43.85			
Public Relation Cost Centre	15.56	25.18			
Training IG Projects	22.82	23.12			
VBRI Core Rehabilitation above 6	84.34	64.17			
<b>Total Expenditure Before Depreciation</b>	<b>1,244.79</b>	<b>1,048.58</b>			
<b>Surplu/Deficit before Depreciation &amp; Reserve</b>	<b>338.71</b>	<b>575.93</b>			
Depreciation	158.41	146.41			
Reserve for Master Infrastructure development plan for Disability Management	-	200.00			
<b>Surplus/Deficit Carried to Balance Sheet- General Fund</b>	<b>180.30</b>	<b>229.52</b>			
	<b>1,583.51</b>	<b>1,624.51</b>		<b>1,583.51</b>	<b>1,624.51</b>

AGM 2022

24th Sep-2022



# Audited Receipts & Payments For the period 01st April 2021 to 31st March 2022

Rs. In Lakhs

Receipts	As At 31-03-2022	As At 31-03-2021	Payments	As At 31-03-2022	As At 31-03-2021
Opening cash & Cash equivalents (including short term Investments) Corpus	832.03	593.76	Fixed Assets	296.34	857.67
		133.84	Capital Work in Progress	(21.37)	(661.80)
Building & Equipment Corpus	180.63	54.98	Long Term Investments	17.49	243.35
Private Grants	-	-	Developmental Rehabilitation	132.72	149.19
GCC Project Grant		-	Early Intervention Centre	549.92	447.31
Donation	1,441.05	1,494.40	Home Expenses	25.35	15.14
Other Income	43.22	26.98	Sangamam School for Special Children	26.36	8.20
Interest Income	99.24	103.12	Medical Testing Unit	25.65	12.63
			Spinal cord injury post acute care centre exps.	52.70	33.33
			Caliper Expenses	15.01	4.87
			Village Based Rehabilitation	125.07	135.85
			School	92.27	67.63
			Vocational Training Expenses	6.94	8.17
			Delivery of Services & Infrastructure	101.70	74.11
			Public Communication & Administration	68.28	69.03
			Training IG Project	22.82	23.12
			Reserve - Master Infrastructure Development	25.04	-
			Increase in Working Capital	3.17	87.26
			Closing cash & Cash equivalents (including short term Investments)	1,106.21	832.03
AGM 2022				24th Sep-2022	48
<b>TOTAL RECEIPTS</b>	<b>2,671.68</b>	<b>2,407.09</b>	<b>TOTAL PAYMENTS</b>	<b>2,671.68</b>	<b>2,407.09</b>



# Outlook for the year 2022-23

**The outlook for the current year is extremely aspirational and promising..  
..., but Challenging.**







# **Outlook for the year 2022-23**

## **Aspirations, Opportunities and Challenges .. .**

**Centre of Excellence**



## 1. Centre of Excellence

### **Centre of Excellence in Development and Rehabilitation for Children with Disabilities**

Enabling Inclusion® is a high impact, family centered and community participatory model for early intervention and child rehabilitation services using the Enabling Inclusion® app, for end-to-end case management and rehabilitation solutions. The EI® model uses community rehabilitation workers to provide holistic rehab services to children with disabilities in their own homes, schools and local centres, supported by rehabilitation specialists by using the EI app®.

We are establishing a Centre of Excellence in Development and Rehabilitation for Children with Disabilities to scale the impact of our model and technology by building partnerships with NGOs, Governments and Corporate for technology development, continuous innovation, training, and collaborative research, to reach millions of Children with Disabilities and families globally to provide them with rehab solutions so that no Child with Disabilities is denied of schooling experience and the right to rehabilitation.

#### **Need:**

Establishment of Centre of Excellence is the mean to achieve this goal. Our immediate target for the next decade is mentioned above which is only a beginning. The above target hardly addresses 1% of the developing countries needs and 4% of India's need. Your help in establishing the Centre will therefore help in a big way to continuously impacting the society and the humanity over a long period of time creating new life for millions of Children with Disabilities.

#### **Expected Impact of the program by 2030:**

- 100,000 children with disabilities will be benefitted
- 200,000 families will get improved economic conditions
- 85,000 children with disabilities will be enrolled in schools, and as a long term impact, 60,000 families will be brought out of poverty



## 2. Enabling Inclusion – Centre of Excellence:

We have already started the Centre of Excellence as a department, but as per the demands of the requirements we need to put in place a suitable systems and operating procedures so that the goal of Centre of Excellence is achieved.

### **Vision:**

An inclusive world in which children, families and communities are given the resources that allow all children with disabilities to reach their full potential.

### **Mission:**

To become the premier organization in enabling, affordable, efficient and effective child rehabilitation solutions with global partnerships and implementation.

### **Values:**

We believe in inclusion, equity and child rehabilitation services are a human right. We respect the beliefs and culture of families and communities. We value innovation and collaboration with partner organizations and are committed to high quality services.

## 2. Enabling Inclusion – Centre of Excellence:

### Global Challenge

According to UNICEF, there are 93- 150 million children with disabilities globally and 90% of children in Low-and-Middle Income Countries (LMICs) do not have access to child development and rehabilitation services. Child rehab services that are available in LMICs are confined to urban, clinic based centres and does not reach semi-urban or rural areas. There is a lack of public, private and non-profit sectors programs that ensures last mile delivery and provide equitable access to all families, regardless of socio-economic status. The main challenges are that rehab professionals are scarce, particularly in rural areas and that there is no cost-effective solution for governments or non-profit organizations.

Research conducted in collaboration with the University of Toronto, McGill University and Harvard Centre for the Developing Child, have published results in peer-reviewed journal and text-books have shown the EI® model significantly reduces caregiver strain and empowers parents, improves child development, improves worker skills, knowledge and job-satisfaction , improved family engagements from 60% to 95%, improved school enrolment from 70% to 85% and resulted in a 75% cost savings compared to urban centre based programs.

### Our Solution

The Enabling Inclusion® solution overcomes the barriers to rehab access by connecting community workers and parents of children with disabilities to rehab specialists, thus empowering children, families and communities to reach their potential. The Enabling Inclusion® app helps organizations achieve this goal by providing a comprehensive digital solution which focuses on parent empowerment and covers all developmental domains. The EI® app which uses cloud based storage in mobile and web versions has individualized case management including family-centered goal setting and intervention planning, tracking of child and parent outcomes, scheduling, planning, monitoring & evaluation and reporting and can be executed via tele-rehab or on-site services.

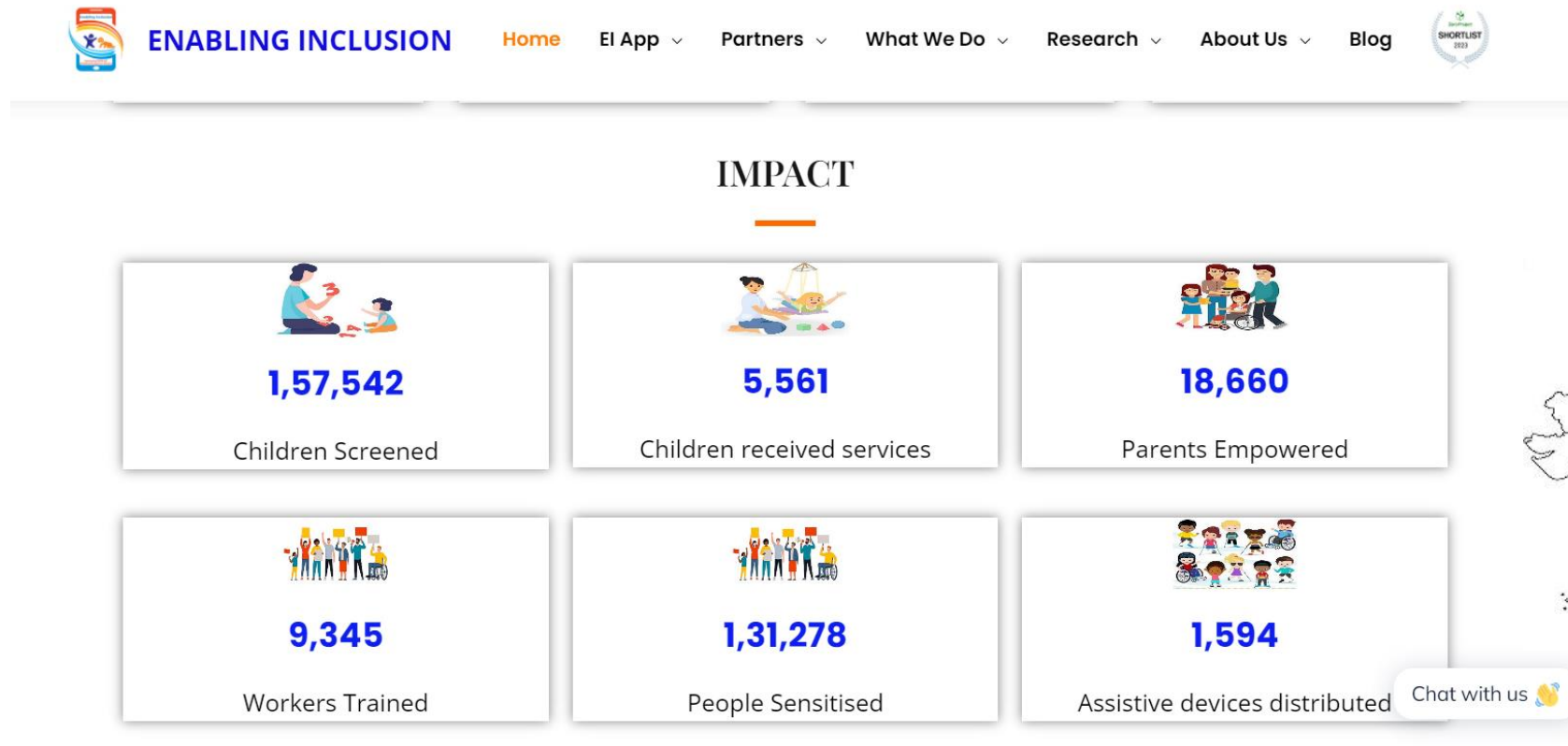
### Our Goal

*Over the next 8 years, through our Centre of Excellence, we aim to impact the lives of 100,000 children with disabilities and 200,000 caregivers in 17 states of India, in 6 other countries, through 5 Govt. partnerships, 35 public-sector partnerships and 40 NGO partnerships.*



## 2. Enabling Inclusion – Centre of Excellence

Progress so far .. ..



### 3. Opportunities – Centre of Excellence

Among the various opportunities, working with the Government of various States is the most important for reaching the most deserving children with developmental delays and disabilities by the sheer reach, authority and budget prospects that are with Governments which cannot be matched by any non-Government organization or a corporate or a funding agency.

Therefore the focus is to create a niche relationship with the Governments and in this regard the partnership with the State Government of Tamil Nadu will be a learning experience of our organization in going forward with other States.



### 3. Opportunities – Centre of Excellence

We are happy to share that we have been reasonably successful in this regard during the period of reporting. We have signed a MoU with the Education Department and Samagra Shiksha in the State of Tamil Nadu and we have been successfully implementing an operational model for District Early Intervention Centres (DEICs) in the District of Tenkasi. Based on the learning and experience we have also proposed to the State Government of Tamil Nadu to be a knowledge partner in the field of disability management with the aim to make the rehabilitation services accessible to all persons with disabilities, particularly for the children with disabilities so that they become empowered and the society becomes enriched in the process.

Therefore the aim is by the next reporting period to the General Body we should have signed and started working with the Tamil Nadu State Government Department for the Welfare of the Differently Abled and also signed up minimum of three districts under the District Early Intervention programs of the Health Department of the State. It is also our goal that by that time we would have established a reasonable working model with Smagra Shiksha in the District of Tenkasi which could be leveraged for replication in other parts of the State also.

The multiplier effects of the consumer surplus at the family touch points will reduce poverty.

## 4. Technology Building - Enabling Inclusion – Centre of Excellence

### Different versions for different users of EI app:

Developing different packages of Enabling Inclusion® for making it affordable for NGOs and also reach more people is one of the major priority areas. Many of the partners NGOs do not need the full package because of the nature of their operations and their priorities. Therefore we will be going from professional version to multidisciplinary version where more in-depth work as we are doing in our organization will be available for the highest level of the version. The revenue generated will also be much reduced because most NGOs are now only at a basic level. If we are to achieve the goals of reaching the children with desired outcomes then more and more direct implementation by Amar Seva Sangam is the best route and for this purpose we need to keep getting corporate sponsorships and other funding agencies' support in different States and in different districts of our own State. This will be in addition to the Government partnerships that we are already working out. This is the next major challenge that we need to address during the upcoming year which has great opportunities.

### Enabling Inclusion® App – further improvements:

- License Managing system
- Assistive Devices Manager
- Adding multiple languages
- Leader board
- Algorithm to capture observation, deviation and out layers.
- Parent login
- Building all the other additional dashboards



## 5. Research and Development – Centre of Excellence

Along with the Enabling Inclusion® Application we need to strengthen the research base of the organization. At present we do not have the core competence to do research and there is no lead person who has that capability. We are at present hiring research workers from outside and also making use of the students' placement and other partnership agreement with various international universities which needs to be strengthened by having a full-fledged research department headed by a competent person. This team will have to be supported by a very good monitoring, evaluation which needs to mine the data, process them and provide them with proper analytics and interpretations as per the requirements of the research team. The managerial reporting for the various Enabling Inclusion activities of Amar Seva Sangam including the reporting of the performance of the partner NGOs and Government needs to be properly developed and a suitable system should put in place so that the top management of Amar Seva is abreast of the progress and performance of the Early Intervention Initiatives.

## 6. Strategic Initiatives – Centre of Excellence

Leverage on the meeting with the Prime Minister and also on the 40<sup>th</sup> year celebrations with the Chief Minister of Tamil Nadu and various other ministers will be the priority area, to promote the organization's various goals, ambitions and vision to make Amar Seva as a preferred destination in this country for any disability.

The necessity for having a Stroke Care Unit and the expansion of the Post-Acute Spinal care Centre has become very important as there are huge numbers of people waiting for the services. Therefore these two buildings which assume to be in a big budget project will be taken up and high effort to be made to complete it before the next reporting period.

A suitable building for the Centre of Excellence is also a top priority for which corporate support under CSR is being solicited which we hope will be completed during the year 2022-23.

A project for Sensory Integration for age 7 to 18 and the adults to have grown above 18 also become very necessary. A building for this purpose along with necessary equipment is also a priority for the current year.



## 7. Sustainability Initiatives

***Sustainability = Internal cost reduction on people and facilities through better performance, efficiency, and systems & process improvement + creation of revenue generation streams using the Skills training and development that ASSA is currently managing+ Enterprise creation (Trained resources which can start enterprises which can be a feeder to ASSA eg. IT Hub, Canteen, Tailoring Units, Milk Chilling Centres, Dairy products).***

The Kitchen and Ghosala can be made self-sustaining. Canteen can be expanded and can be run on a Sound financially viable project.



# **Outlook for the year 2022-23**

## **Aspirations, Opportunities and Challenges .. .**

**Institutional Strengthening**





## **Institutional Strengthening**

ASSA should be on par with the current environment, enable hiring the best resources at affordable cost, groom, and train existing resources to move horizontally and take up multifunctional roles and be the Best Employer in the NGO sector.

There is need to build capacities commensurate with the current organizational fast paced growth and PAN India aspirations and also have policies that should help to hire the best, retain and build upon them as a carrier solution while ensuring that the basic ethos and culture of the organization are maintained. The strengthening measures would include a complete revamp of existing HR Policies, revising the organization structure, strengthening the constitution of the organization to global standards and autonomy with accountability to the functional heads.

Monitoring and evaluation, social audit/ impact evaluation, and Survey are essential for a Non-Profit organization. Better cost management & Synergies, uniformity, optimizing horizontal Vs vertical growth are the need of the hour.

Active employee engagement, training and capacity building to meet the demands of the growth of the organization, a fully integrated HR software with linkages to accounting, performance appraisal and training with access for employees' self service will be initiated in the current year to ease administration and to save costs.



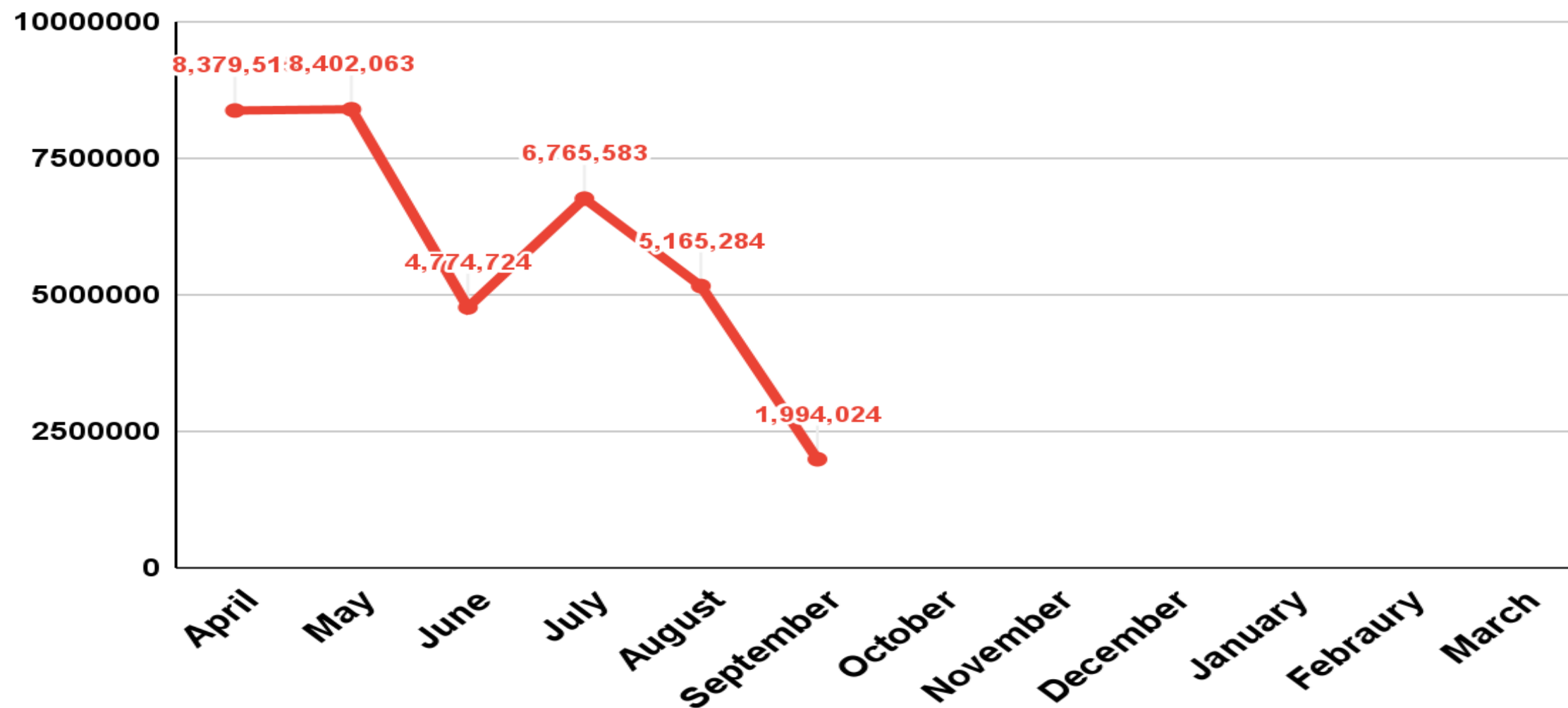
# **Outlook for the year 2022-23**

## **Financial Forecast 2022-23**

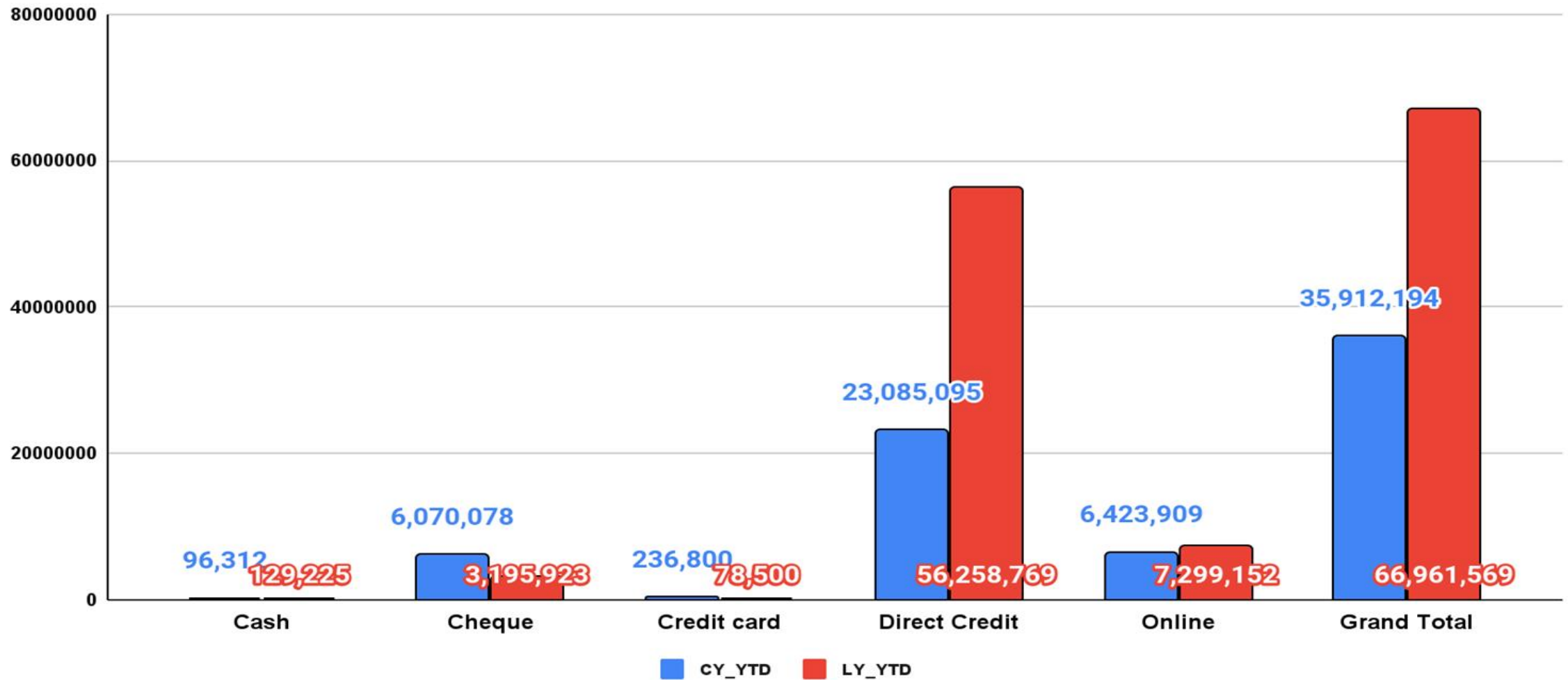




# Monthwise Funds Received 2022-2023

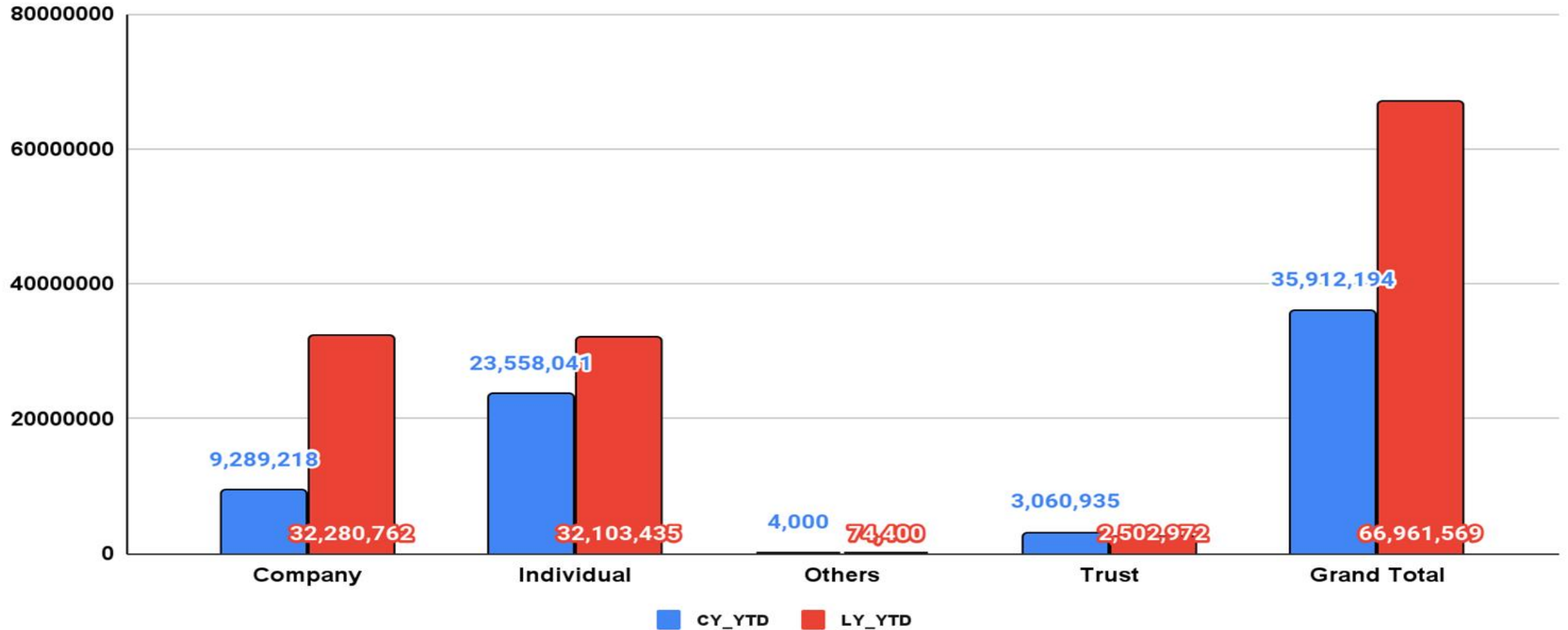


# Receipt Wise 2022-23

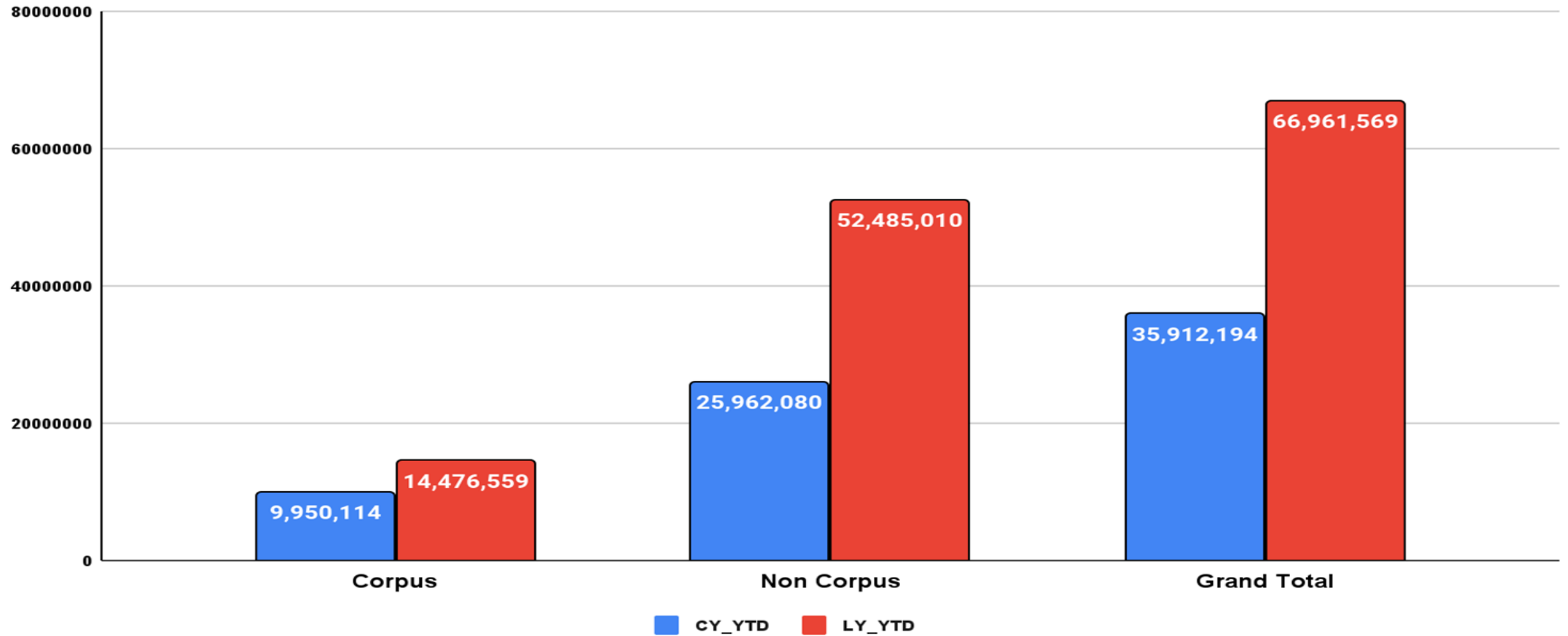




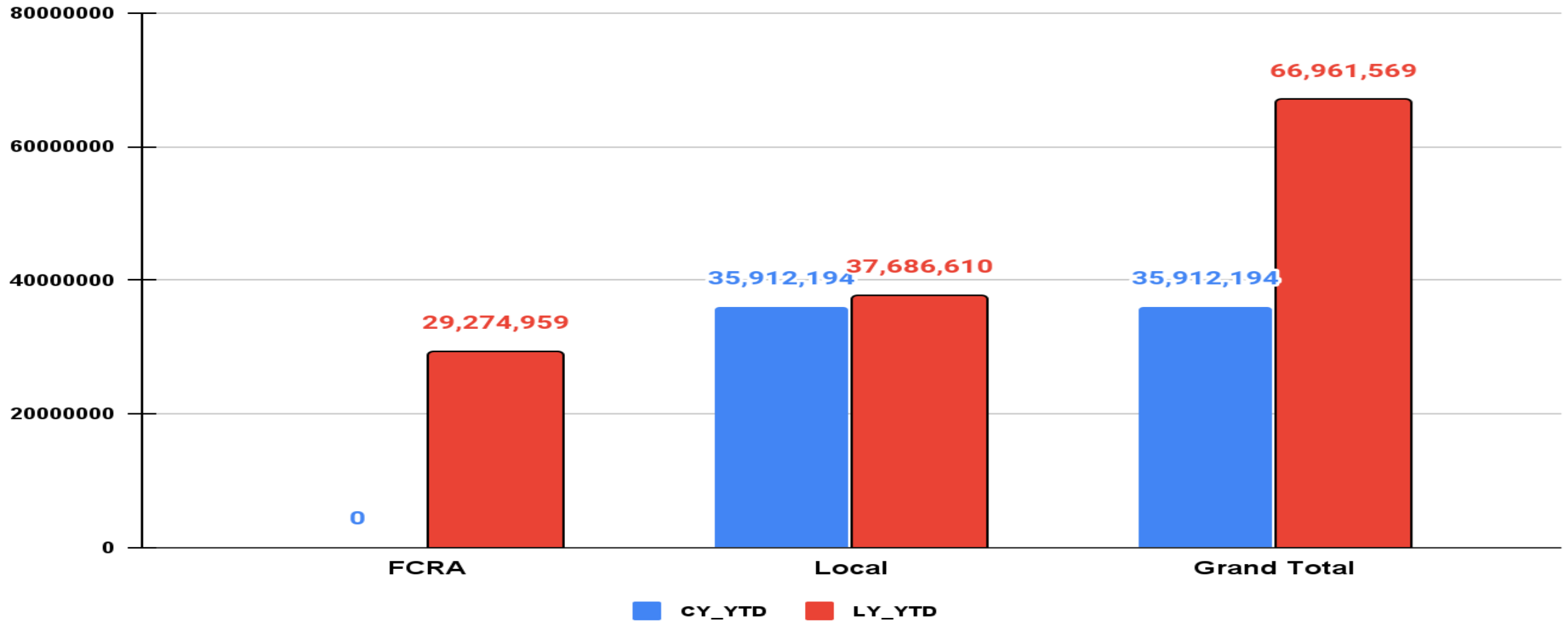
# Donortypewise 2022-23



# Corpus/Non-Corpus 2022-23



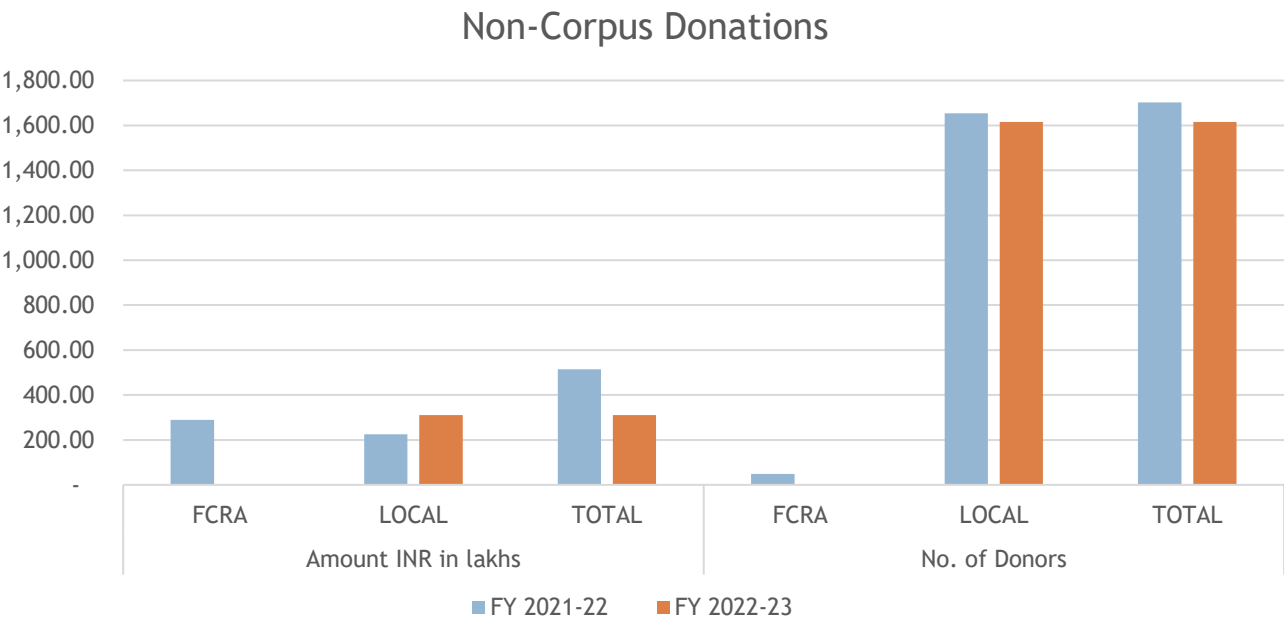
# Fundwise 2022-23





# Non Corpus Donations

Non Corpus Donations	Amount INR in lakhs			No. of Donors		
	FCRA	LOCAL	TOTAL	FCRA	LOCAL	TOTAL
FY 2021-22	289.48	224.64	514.12	48	1654	1702
FY 2022-23 (up to 15 <sup>th</sup> Sep 2022)	-	259.62	259.62	0	1615	1615



# Financial Forecast 2022-23

Values in INR (lakhs)

	Actual till August 22	Actual Projected (April 22 to Mar 23)	Actuals LY (Apr 21 to March 22)	CY Budget (April 22 to Mar 23)	% of Forecast over LY Actuals	% of Forecast over Budget
Non Corpus	218.52	745.00	675.74	725.48	10%	3%
Add:					0%	0%
HCI Others	-	43.00	42.71	43.00	1%	0%
ASHA	-	20.00	-	20.50	0%	-2%
Oracle	-	-	-	-	0%	0%
Omcharity	-	-	-	-	0%	0%
General Covid-19 Donations	-	-	-	-	0%	0%
Covid-19 Revive and Rebuild	-	-	63.65	-	-100%	0%
Interest	17.12	108.00	99.00	120.00	9%	-10%
Others (Departmental Income)	53.24	102.22	43.21	90.00	137%	14%
Total	288.88	873.22	924.31	998.98	-6%	-13%

# Financial Forecast 2022-23

Values in INR (lakhs)

<u>EXPENDITURE</u>	CY Exps. upto August 22		Forecast Exps September 22 to March 23		LY Actuals 2021- 22		CY Budget 2022- 23		% of Forecast over LY Actuals	% of Forecast over Budget
Developmental Rehabilitation	Rs.	101.10	Rs.	169.85	Rs.	161.68	Rs.	258.83	68%	5%
Home	Rs.	11.33	Rs.	21.75	Rs.	25.35	Rs.	32.09	31%	3%
Sangamam School for Special Children	Rs.	3.47	Rs.	6.66	Rs.	6.16	Rs.	26.73	64%	-62%
Medical Testing Unit	Rs.	17.31	Rs.	33.24	Rs.	25.65	Rs.	31.55	97%	60%
Spinal Care	Rs.	4.32	Rs.	8.29	Rs.	13.07	Rs.	59.55	-3%	-79%
Caliper Expenses	Rs.	-	Rs.	-	Rs.	9.82	Rs.	16.01	-100%	-100%
School Expenses	Rs.	43.03	Rs.	82.62	Rs.	84.11	Rs.	106.12	49%	18%
Vocational Training Expenses	Rs.	-	Rs.	-	Rs.	1.77	Rs.	17.18	-100%	-100%
Delivery of Services and Infrastructure	Rs.	72.70	Rs.	139.58	Rs.	97.68	Rs.	76.42	117%	178%
Public Communication and Administration Group	Rs.	28.65	Rs.	55.01	Rs.	68.28	Rs.	44.53	23%	88%
Training IG	Rs.	-	Rs.	-	Rs.	17.60	Rs.	19.99	-100%	-100%
Foster care centre	Rs.	0.47	Rs.	0.90	Rs.	4.02	Rs.	5.60	39%	0%
<b>Total Expenditure</b>		<b>282.38</b>		<b>517.91</b>		<b>515.19</b>		<b>694.60</b>	<b>56%</b>	<b>16%</b>
<b>Total Income</b>		<b>288.88</b>		<b>873.22</b>		<b>924.31</b>		<b>998.98</b>	<b>-6%</b>	<b>-13%</b>
<b>Surplus/Deficit</b>		<b>6.50</b>		<b>355.31</b>		<b>409.12</b>		<b>304.38</b>	<b>-13%</b>	<b>16%</b>



# THANKS

Amar Seva Sangam has completed forty one successful years of praiseworthy service towards rehabilitation of the differently abled. From a humble beginning of five children in 1981, it has today grown as a leading institution in the field of Disability Management not only because we were able to adjust ourselves to demanding situations but also because of the guidance of our Patron-in-Chief, Dr. M.S. Swaminathan and Patron Shri N. Vaghul besides the support of all the Executive Committee members, General Body members, Advisory Board members, past Ex-officio Chairmen and others. We are grateful to all Government Officials. We are indebted to all our volunteers both in India and abroad, who are helping our Sangam and adding credit to it from behind the scenes.

# THANKS

Our thanks are also due to Messrs. U. Shekhar, Adarsh Nayyar and G. Ramakrishnan of Galaxy Surfactants, Bhuvaneswari, Venkatesh. S. Cowlagi HUF, Kumar, (all from Mumbai), Hema Ganesh of Delhi, Nalini Ramachandra, Rajan Babu of Pune, Shanthi Balasubramanian and R.P.Krishnamachari, R.Balasubramanian, R.Seshasayee, R.P.Ragavan, A.Balasubramaniam, Rajalakshmi Balasubramaniam, Viswanathan IPL, Krishnamoorthy of Simson Group of Companies (all from Chennai), Y.Balasubramanian, Kothagiri, Mukund Kulkarni, Kolkatta and Rajeev Mecheri, N.Venkatramani, Malathi Ramani, Chennai, Logix Health Solutions (P) Ltd., Bangalore, Antrix corporation, HCL,Mumbai, SCB, Mumbai, S.Raman, Shencottai, for their financial and other support rendered throughout the year.

# THANKS

We shall be failing in our duty, if we do not thank Handi-Care Int'l, Canada, Grand Challenges Canada, Oracle, USA, Messrs. S.Yegnasubramanian and Kalraman, USA, Digvijay Singh, Sweden, CAF America, CAF India, Azim Premji Philanthropic Initiatives, Sitaram Jindal Foundation, Give India, Your Cause, Benevity, Global Giving, Give Now for their support. Our thanks are also due to our Statutory Auditors, Legal Advisors, Consultants, Doctors. Our special thanks to Messrs. G.R.Thangamaligai Jewellers, Chennai, who have been consistently supporting us in bringing out the Annual Report. Last but not the least, our thanks are due to our hard-working staff who continue to put their heart and soul in discharging their duties towards achieving our goal, viz. establishment of the “Valley for the Disabled”. It is with pride we record here that our staff has given superb cooperation in our endeavour to implement various HRD programs and also closely follow the norms set by ISO.



# Thank you

